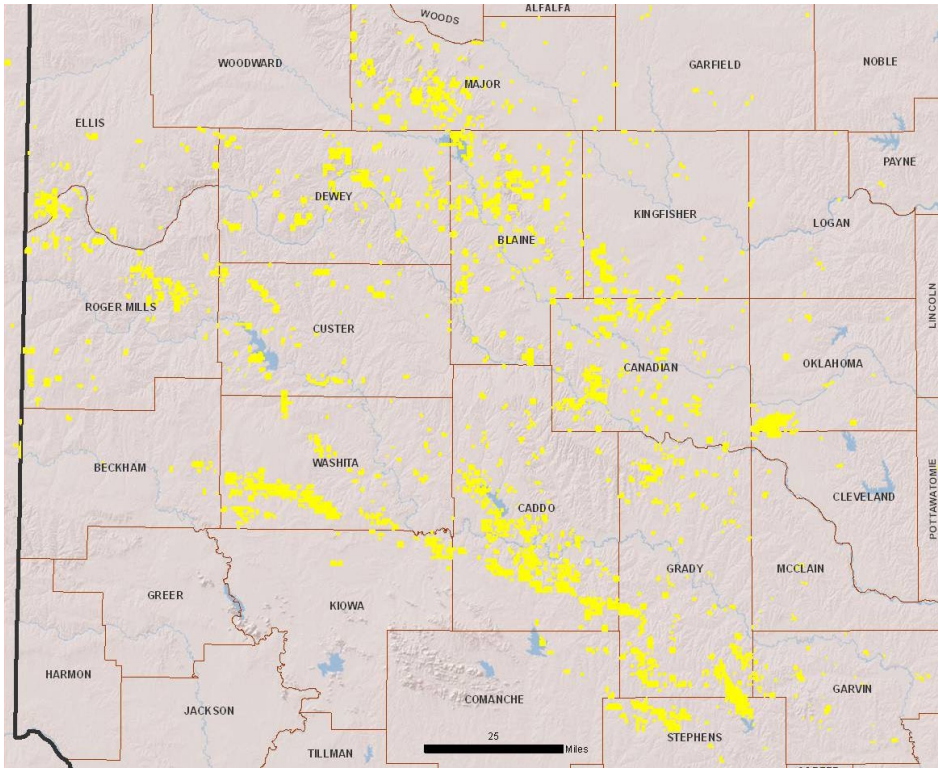


Oklahoma Facts



Marathon has been actively involved in exploration and production in Oklahoma for more than 70 years. The Company has well-established production in the Anadarko Basin from operations including the Cement, Huntley, Rocky, Knox, Strong City, Wheatland, Elk City, Marlow, Watonga and Ammunition fields. Marathon's Oklahoma sales for the 12 months ending December 2010 averaged 3 thousand barrels per day (mbpd) of liquid hydrocarbons and 66 million cubic feet per day (mmcf) of natural gas, representing 4 percent and 18 percent of Marathon's total U.S. liquid hydrocarbon and natural gas sales, respectively.

Marathon has been an active participant in the emerging Woodford unconventional resource play in the Anadarko Basin of western Oklahoma. Since 2008, the Company has participated in 18 wells (5 operated, 13 non-operated) in the play.

The Company currently holds approximately 125,000 net acres in the core of the Anadarko Woodford play, with a working interest of approximately 60 percent in its Company-operated assets. Marathon will be executing a more aggressive Company-operated Anadarko Woodford program in 2011. Program focus will be in the liquids-rich condensate and oil windows of the play. The Company expects that with the successful development of this program, the

ABOUT OKLAHOMA

- › Actively involved in exploration and production in Oklahoma for more than 70 years
- › Holds over 300,000 net acres in Oklahoma, with approximately 125,000 net acres in the Anadarko Woodford play
- › Overall P50 net resource potential approaching 300 mmboe with approximately 170 mmboe in the Anadarko Woodford as of December 31, 2010

MARATHON OIL CORPORATION (NYSE: MRO) 2010 AT A GLANCE

(data as of 12/31/2010)

Revenues*

\$11.7 billion

Income From Continuing Operations*

\$1.9 billion

Net Income*

\$2.57 billion

Capital Expenditures**

\$3.4 billion

Net Liquid Hydrocarbon Sales

245 mbpd

Net Natural Gas Sales

878 mmcf

Net Synthetic Crude Oil Sales

29 mbpd

Net Proved Liquid Hydrocarbon, Natural Gas and Synthetic Crude Oil Reserves

1.6 billion boe

*Marathon's downstream businesses were spun-off on June 30, 2011, and are reported as discontinued operations. The discontinued operations presentation has not yet been audited and these values are preliminary.

**Includes accruals.



play could yield more than 450 net locations, with P50 net resource potential of approximately 170 mmboe as of December 31, 2010.

Marathon had discoveries extending the Rocky Field in Washita County and the Huntley Field in Caddo County in 2010 through successful exploration and appraisal drilling. Marathon holds more than 10,000 net undeveloped acres in key strategic exploration projects along the Wichita Mt. Front and the Deep Anadarko Basin. In 2011, the Company plans to participate in up to five conventional exploration and appraisal wells. Marathon employs over 100 people in Oklahoma City and various field offices.

MARATHON OIL'S BUSINESS

Based in Houston, Texas, Marathon Oil Corporation (NYSE: MRO) is an international independent energy company engaged in exploration and production, oil sands mining and integrated gas.

OUR VALUES

Marathon's corporate values affirm our commitment to health, safety and the environment; corporate social responsibility; ethics and integrity; and diversity. Trust, honesty and respect form the foundation for how we make business decisions, the way we treat our customers and partners, the type of working environment we create and the care we take in the communities where we operate. These are the values we live by every day.

Cautionary Note to U.S. Investors - The United States Securities and Exchange Commission (SEC) permits oil and gas companies, in their filings with the SEC, to disclose only proved, probable and possible oil and gas reserves. Marathon Oil Corporation uses certain terms in this fact sheet, such as P50 net resource potential that the SEC's guidelines strictly prohibit us from including in filings with the SEC. U.S. Investors are urged to consider closely the disclosures in Marathon's periodic filings with the SEC, available from us at 5555 San Felipe, Houston, Texas 77056 and the Company's Web site at <http://www.marathonoil.com>. You can also obtain this information from the SEC by calling 1-800-SEC-0330.

Forward Looking Statement: This fact sheet contains forward-looking statements about our Anadarko Woodford development, including projections of P50 net resource potential and future drilling plans. These statements are subject to risks and uncertainties that could cause actual results to differ materially from those expressed or implied by such statements. In accordance with the safe harbor provisions of the Private Securities Litigation Reform Act of 1995, Marathon has included in its Annual Report on Form 10-K for the year ended December 31, 2010, and subsequent Forms 10-Q and 8-K, cautionary language identifying important factors, though not necessarily all such factors, that could cause future outcomes to differ materially from those set forth in the forward looking statements.